

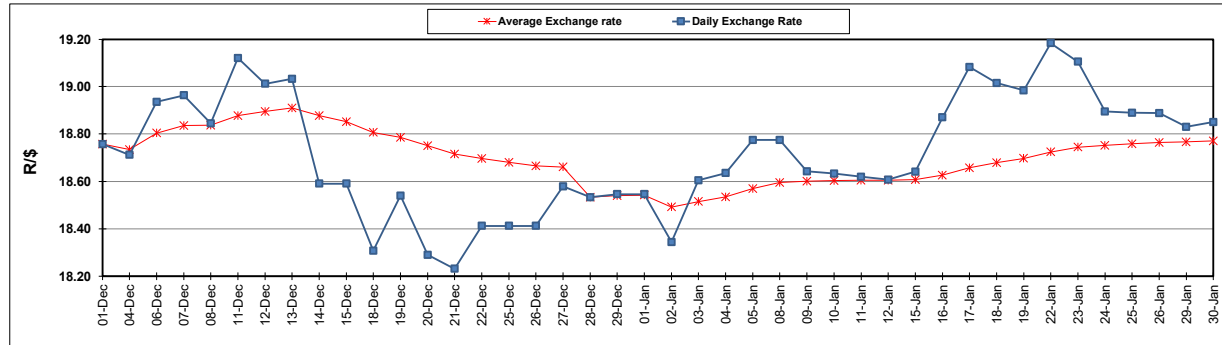
South African Cents per Litre (SA c/l)	PETROL 95 ULP	PETROL 93 ULP & LRP	DIESEL 0.05%	DIESEL 0.005%	ILL. PAR.
GAUTENG PUMP PRICE AS FROM 03/01/2024	2,249.000	2,217.000	-	-	-
WHOLESALE PRICE AS FROM 03/01/2024	-	-	2,063.170	2,072.570	1,530.938
SINGLE NATIONAL MAXIMUM RETAIL PRICE	-	-	-	-	1,981.000
BASIC FUEL PRICE - 30/01/2024	1,338.375	1,301.472	1,432.154	1,441.418	1,421.348
PRESS RELEASE CONTRIBUTION TO BFP 03/01/2024 - 30/01/2024	1,146.870	1,114.870	1,240.630	1,250.030	1,284.128
UNIT OVER/(UNDER) RECOVERY - 30/01/2024	(191.505)	(186.602)	(191.524)	(191.388)	(137.220)
AVERAGE BASIC FUEL PRICE 28/12/2023 - 30/01/2024	1,221.649	1,184.454	1,319.238	1,325.996	1,346.290
AVERAGE UNIT OVER/(UNDER) RECOVERY 28/12/2023 - 30/01/2024	(66.499)	(63.637)	(63.275)	(59.299)	(46.662)

ANALYSIS MOVEMENT OF AVERAGE OVER/(UNDER) RECOVERY

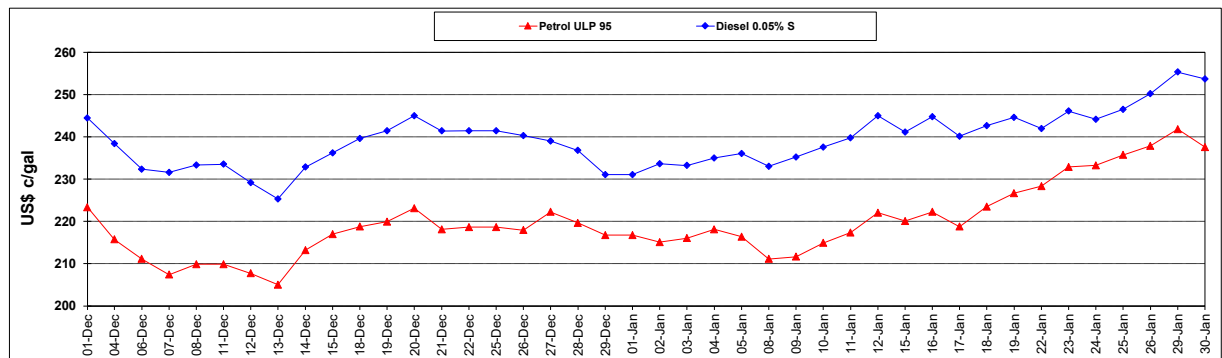
	PETROL 95	PETROL 93	DIESEL 0.05%	DIESEL 0.005%	ILL. PAR.
- MOVEMENT IN INTERNATIONAL PRODUCT PRICES	(59.346)	(56.702)	(55.551)	(51.535)	(38.780)
- MOVEMENT IN EXCHANGE RATE	(7.153)	(6.935)	(7.724)	(7.764)	(7.882)
AVERAGE UNIT OVER/(UNDER) RECOVERY 28/12/2023 - 30/01/2024	(66.499)	(63.637)	(63.275)	(59.299)	(46.662)

R/\$ EXCHANGE RATE - (R/\$18.8500 - 30/01/2024)

EXCHANGE RATE USED IN BASIC FUEL PRICE



INTERNATIONAL PRODUCT PRICES OF BASKET USED IN BASIC FUEL PRICE



BASIC FUEL PRICE IN SA CENTS PER LITRE

